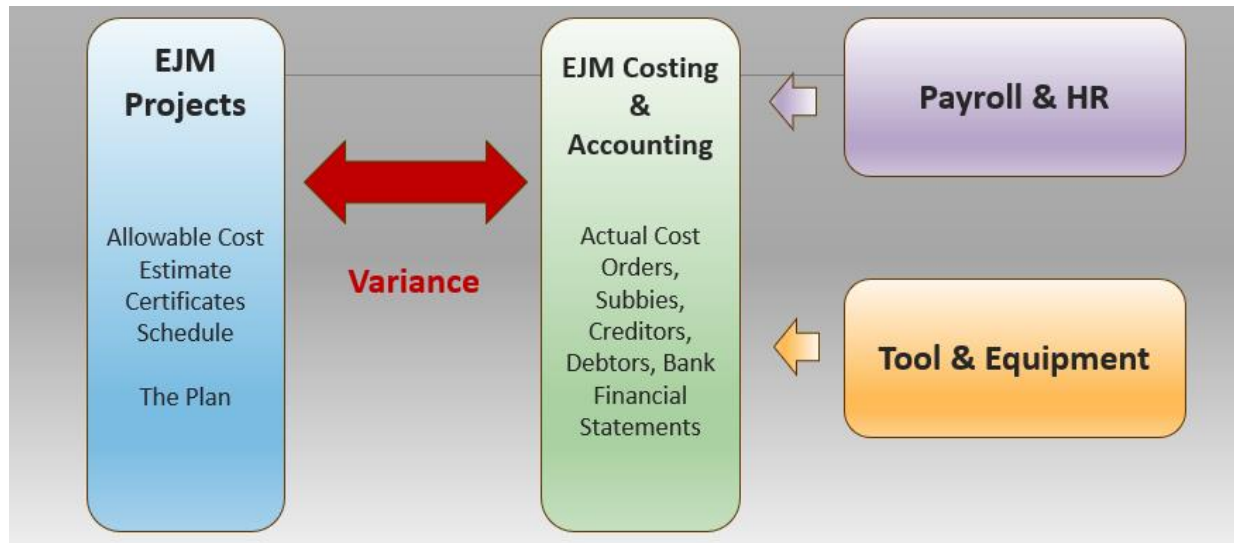


# EJMProject-SQL overview

The **EJM System** is a comprehensive system designed for the unique requirements of the construction industry. It consists of various subsystems that can be used as stand-alone applications but forms a powerful management tool when used together.

The **EJMProject-SQL** subsystem is used for estimating, certificates and planning. It integrates seamlessly the EJM SQL Accounting, Payroll and Tool & Equipment subsystems.

The actual costs from the various sub systems are then compared to the allowable costs generated in EJMProject-SQL in the Variance Report. This enables the user to take action as soon as unacceptable variances occur during the execution of the project.



*The EJM System*

## Estimate overview

### Resource library

- The estimate is done in terms of resources
- Costs are captured against resources in the accounting and sub-systems – compared in the Variance Report.
- There are 9 major headings such as P&G, Plant, Labour, Material, Subcontractors.
- Each of the 9 major headings can have up to 26 subheadings numbered A to Z
- Resources are entered under the subheadings, e.g. 3B for Artisan and given a unique code such as 3B0010

1 P&G	2 Plant	3 Labour	4 Material	5 Material	6 Pipes	7Roads	8 Subby	9 Provision
1A Establish 1B Running	2A Scaffold 2B Vehicles	3A Supervise 3B Artisan	4A Reinforce 4B Aggregates	5A Cement 5B Additives	6A uPVC 6B mPVC	7A Stabilise 7B Bitumen	8A Lab. only 8B Supply,Fit	9A Provision
	2C Small 2D Fuel Oil 2G Concrete 2I Loaders 2J Compress 2K Tractor 2P Excavator	3C Operator 3D Skilled	4C Brick, block 4E Window,dr 4G Plumbing 4H Waterprf 4I Ceiling 4K Ironmng	5C Readymix 5D Shuttering 5E GeoTextile 5F Fasteners 5G Box	6C PVC 6D HDPE 6E Polyprop 6G SolilDrain 6N Channels 6O OG pipe	7C Signs 7D Gabions 7E Guardrail		

[Click here to download](#) sections from a Housing, Building and Civils resource library.

**Example of resources:**

Code	Description	Unit	Default Rate	Rate's Date
<b>3B</b>	<b>Labour / Artisans</b>			
3B0010	Carpenter	Hour	50.00	2019-12-18
3B0020	Bricklayer	Hour	50.00	2019-12-18
<b>3D</b>	<b>Labour / Skilled</b>			
3D0010	Skilled	Hour	40.00	2019-12-18
3D0020	Steelfixer	Hour	40.00	2019-12-18

**Cost centres**

- Cost centres are a way to link bill of quantity (BoQ) items together
- All BoQ items to do with Earthworks will be assigned to cost centre C and all those to do with concrete to cost centre F
- Together with the Project and Resource codes, Cost centres are also used when capturing costs in the Costing & Accounting system as well as the Payroll and Tool & Equipment that feeds into the cost ledger.
- Number refers to an internally generated number. Code can be changed and is used in the assigning and reporting. It must be unique. Accounting refers to the cost centre's code in the accounting system.

<i>Number</i>	<i>Code</i>	<i>Description</i>	<i>Accounting</i>
1	A	PRELIMINARY & GEN	A
2	B	SITE & DEMOLITION	B
3	C	EARTHWORKS	C
4	D	FORMWORK & JOINTS	D
5	E	REINFORCEMENT	E
6	F	CONCRETE & WATERPRF	F
7	G	BRICKWORK	G
9	I	PLASTERING	I
10	J	CARPENTRY AND JOINER	J
11	K	ROOFING	K
12	L	CEILING & PARTITION	L
13	M	PLUMBING & DRAINAGE	M
14	N	IRONMONGERY	N
15	O	WINDOWS AND DOORS	O

**MasterBill**

- The MasterBill is a standard list of recipes that the estimator builds up to rapidly price a new Bill of Quantities.
- In its build-up it can consist of two or more resources and or MasterBills with a lower code (use MasterBill A1001 in pricing MasterBill B1001 but not vice versa.)
- A MasterBill can used to price an item if it is similar to a MasterBill item. For example, if there is a BoQ item for the excavation in soft material per m3 and there is a MasterBill items B1001 that has been priced to do it, price the BoQ item by linking and copying it from the MasterBill B1001
- In pricing a MasterBill, any resource and any MasterBill item lower down (towards the base of the pyramid) can be used.

Build up more complex MasterBills. MasterBills can use resources and other Masterbills lower in the pyramid.  
Mortar (G00020) consisting of resources sand (4B3010) cement (5A0030), MasterBills Mixing Team (@Ht070) and Concrete Mixer (@PC019) can be used in a one-brick wall (G42039)

**MASTERBILL (hierarchical with increasing complexity from @ to Z)**

## MasterBill Items

In building up a MasterBill you usually start with the basic building blocks that will be used in more complex build-ups later

MasterBill	Description	Unit	Rate
@HT	LABOUR TEAMS		
@HT050	Excavation team 1 + 4 unskilled	Day	1 170.00
@HT060	Concrete Team 2 + 6 unskilled	Day	2 070.00
@HT110	Carpentry Team 1 + 2 (small boxes, slab edges, columns, stairs)	Day	1 170.00
@HT150	Pipe laying Team 1 + 3	Day	1 440.00
@HT160	Brick laying team 1 + 1	Day	810.00
@HT220	Painting team 1 + 2	Day	1 170.00
@P	PLANT, EQUIPMENT & TOOLS CLUSTERS		
@PB	BACKHOE/ LOADERS		
@PB010	Backhoe Loader:2 X D: 7-8 t: (40Kw)	Hour	435.00
@PB020	Backhoe Loader:4*4 D: 7-8 t: (50Kw)	Hour	437.91
@PC	CONCRETE EQUIPMENT		
@PC030	Con Mixer: Diesel/Petrol: 400 l w/o labour	Day	2 030.00
@PC110	Con Trowel/Power Float: Walk Behind	Day	380.80
@PC125	ConCrete Vibrators: Diesel/Petrol Drive plus poker w/o labour	Day	380.80
@PC130	Concrete Saw:Manual Propelled 9.5 kW/13HP w/o labour	Day	417.50
@PD	BULLDOZERS		
@PD010	Bdozer :17-20t125kW: Cat D6	Hour	937.99
@PD030	Bdozer :30-35 t:200W:CatD9	Hour	1 395.18
@PE	EXCAVATORS & LOADERS		
@PE010	Traxc:25t (120kW) Cat963	Hour	905.11
@PE040	Traxc:35t rock bucket (160kW) Cat330	Hour	1 109.00

These are then used in more complex MasterBill items:

MasterBill	Description	Unit	Rate
C000	Trench excavation		
C00010	Excavate trench (excavator) - intermediate material. Trim	M <sup>3</sup>	55.38
C00020	Excavate trench (TLB) - soft. Hand trimming	M <sup>3</sup>	54.00
C00030	Excavate trench (hand) 2.4m <sup>3</sup> /day/worker	M <sup>3</sup>	93.75
C001	Trench bedding		
C00110	Bedding with material from trench	M <sup>3</sup>	97.29
C00120	Bedding with material from commercial sources	M <sup>3</sup>	422.29
C002	Trench backfill		
C00230	Backfill by hand	M <sup>3</sup>	64.86
C00240	Backfilling from excavations compact to 90% Mod AASHTO	M <sup>3</sup>	69.52

[Click here to download](#) for items from a Housing, Building and Civils MasterBill.

## The MasterBill screen and pricing

In order to price a MasterBill item, **double-click** on the item's **Cost Rate** cell.

Header Type	Row Index	Item Code	Description	Unit	Cost Centre	Cost Rate	Notes
Sub Header	0	C00	TRENCHING				
Sub-Sub Header	0	C000	Trench excavate clusters				
Markup Value	0	C00010	Excavate trench (excavator) - intermediate material. Trim	M³	EARTHWORKS	28.88	EM 19/12
Markup Value	1	C00020	Excavate trench (TLB) - soft. Hand trimming	M³	EARTHWORKS	55.00	EM 19/12
Markup Value	2	C00030	Excavate trench (hand) 2.4m³/day/worker	M³	EARTHWORKS	93.75	EM 19/12
Markup Value	3	C00040	.	.	EARTHWORKS		

The pricing screen will be displayed:

- On the top left is the summary of the costs under the (9) resource cost headings
- Towards the right is a list of the Global Variables. Refer to the next section for a detailed discussion
- Centre right is the Local Variables. These are variables that only apply to this MasterBill item
- On the right-hand top left is a list box for the resources and underneath it the MasterBill list box
- The body of the pricing screen consist of the following columns:
  - **Code** This will be either a MasterBill or a Resource code.
  - **Type** This will be automatically populated depending on whether the code is a MasterBill (MB) or a Resource R
  - **Rate** it will be inherited from the code. It cannot be changed here
  - **Quantity Formula** is a string expression to calculate the quantity. The arithmetic rules of precedence apply.
  - **Quantity** the calculated result of the Quantity Formula
- **Production/** This can also be a string expression similar to the Quantity Formula The sum of the cost lines will be divided by the value of the string.

Project: Master Bill Detailed Cost

File Navigation

Accept Accept And Close Next Item Previous Item

Category	Value
Fastener/Sundry	0.00
Labour	15.50
Material	0.00
P&G	0.00
Plant	39.50
Prov sum	0.00
Subby	0.00

Name	Formula
[Gfoam]	0
[GhrDay]	9
[GintBag]	0
[GintCl]	1
[GintClav]	1

Code	Type	Description	Unit	Rate	Quantity Formula	Quantity	Amount
@P010	MB	Backhoe Loader:2 X D: 7-8 t: (40Kw)	Hour	435.00	1 *TLB with labour to trim	1.00000	435.000000...
3P0010	R	Section leader	Hour	40.00	1	1.00000	40.000000...
3G0030	R	Labour - casual	Hour	25.00	3	3.00000	75.000000...

Production / 10

Total 10.00000000... 55.00

Unit: M³ Item: C00020 Description: Excavate trench (TLB) - soft. Hand trimming

Code	Description
1A0000	SITE ESTABLISHMENT
1A0010	Erect site fencing
1A0020	Erect site store / tool shed
1A0030	Erect site toilet flushable
1A0040	Provide and erect name board
1A0050	Transport caravans to site and from site
1A0060	Transport containers to and from site
1A0070	Site Office - provide for duration of contract
1A0080	Car port - provide for duration of contract
1A0100	1A0100
1B0000	SITE RUNNING

Item	Description
@HP010	Site Agent
@HP020	Foreman
@HP030	Technician
@HP040	.
@HT030	Demolition team 1+ 2 unskilled
@HT040	Excavation team 1 + 1 unskilled
@HT050	Excavation team 1 + 4 unskilled
@HT060	Concrete Team 2 + 6 unskilled
@HT070	Concrete mixing & wheelbarrow team 1 + 5 ...
@HT100	Carentriv Team 1 + 1

## Variables

Say we do not want to build up rigid formulas for fixed size teams working a fixed number of hours per day, or where the length of the workday differs from site to site and/ or the composition of the teams, we can use variables.

There can be either Global Variables (starting with a G) that applies over the whole project or Local Variables (starting with an L) that applies to only this project

Project Master Bill Detailed Cost

File

Accept Accept And Close

Category	Value
> Fastener/Sundry	28.60
Labour	273.12
Material	386.90
P&G	0.00
Plant	2.22
Prov sum	0.00
Subby	9.90

Global	
Name	Formula
* Click here to add a new row	
[GhrDay]	9
[GIntBag]	0
[GIntCill]	1
> [GIntClay]	1
[GIntMaxi]	0

Local	
Name	Formula
* Click here to add a new row	
[Lwidth]	0.400
[Lheight]	0.600
> [Larea]	[Lwidth] * [Lheight]

Code	Type	Description	Unit	Rate	Quantity Formula	Quantity	Amount
4E3110	R	Aluminium window 400w 600h	Each	0.00	1	1.00000	0
O00010	MB	Align and fix window frame to wall	ea	61.00	1	1.00000	61.00000000...
> 4C1010	R	Concrete Lintel 100mm x 0.9m	Each	37.00	[GIntClay] ' at least 1 lintel	1.00000	37.00000000...
4C1010	R	Concrete Lintel 100mm x 0.9m	Each	37.00	[GXClay] ' Additional lintel if plastered outside	1.00000	37.00000000...
I30050	MB	Plaster & paint not exceeding 150mm...	M	36.17	2* [Lheight] ' internal sides of window	1.20000	43.4008800...
I40040	MB	Plaster & paint soffit of window openin...	M	52.62	[Lwidth] ' Internal soffit	0.40000	21.0482100...
I40030	MB	Plaster & paint not exceeding 150mm ...	M	30.68	[Lwidth] ' Plaster internal window cill	0.40000	12.2732100...
G90170	MB	Internal terazo cill	M	135.61	[GIntCill] * [Lwidth]	0.40000	54.2450083...

## Importing the Bill of Quantities

Import the Bill of Quantities from a file such as Excel or WinQs

If you import from Excel, match the columns in the Excel sheet with the fields in the Bill

Columns that turn green has been successfully matched. Those in pink will not be imported.

Import Import And Close

Select Excel file to Import : C:\Users\Ernst Marais\Desktop\EJM demo\Examples\SQL Project met Level.xlsx

Import File Setup :

BoQ

Import Settings

Import Sheet :

Level	Item	Description	UNIT	QUANTITY	RATE
HEADER TYPE	ITEM CODE	DESCRIPTION	UNIT	QUANTITY	IGNORE
> 1	.	BILL 1:			
2		PAVING CRACK REPAIRS WITHIN ...			
6	1	Removal of concrete Paving	m3		1170.4
6	2	Concrete class 35MPa/38mm laid ...	m3		1292
3	.	Excavation item:			
6	3	Excavations not exceeding 2m de...	m3		462
6	4	Rip and recompact insitu material ...	m2		3400
6	5	G2 materials compacted to 98%	m3		622
6	6	G5 materials compacted to 98%	m3		150
6	7	Sawcut 107mm deep and 3mm wid...	m		1800
6	8	Coating of joints	m2		471
6	9	Curing of concrete surfaces	m2		3400
6	10	Variation in rate of application of c...	l		300
6	11	Broom finish	m2		3400

## The Bill of Quantity screen

Header Type	Row Index	Copy MB	Item ...	Description	Unit	Cost Centre	Bill Quantity	Detail Price	Cost Rate	Sell Rate	Cost Amount	Markup	Sell Amount	Notes	Final
Sub ...	2			<b>EARTHWORKS</b>											
Ma...	0	C10040	n1010	Excavate in soft for strip footing, use as backfill. Trim excavation	M³	EARTHWORKS	6.85		136.43	156.89	934.13	15.00%	1 074.23		
Ma...	2	C10420	p1010	150 mm G7 selected layer compacted to 93% Mos AASHTO (Min CBR 15%)	M³	EARTHWORKS	5.30		445.32	512.11	2 360.17	15.00%	2 714.18		
Sub ...	3			<b>FORMWORK &amp; MOVEMENT JOINTS</b>											
Ma...	0	D70050	n1010	Formwork to edge of slabs 300mm high	M²	FORMWORK...	29.02		258.90	297.74	7 514.57	15.00%	8 641.90		
Sub ...	4			<b>REINFORCEMENT</b>											
Ma...	0	E10050	p2040	Type reference 193	M²	REINFORCE...	124.59		35.14	40.41	4 378.04	15.00%	5 034.78		
Ma...	1	E30110	n1010	SCBF High Tensile Bars: Y12mm	Ton	REINFORCE...	0.77		15 962.50	18 356.88	12 370.42	15.00%	14 225.99		
Ma...	2	E40030	q1100	4mm dia wire roof tie bit into brickwork 1600mm long	NO	REINFORCE...	3.00		15.10	17.36	45.30	14.97%	52.08		
Sub ...	5			<b>CONCRETE &amp; WATERPROOFING</b>											
Ma...	0	F01130	p2040	Power floated finish.	M²	CONCRETE ...	124.59		19.73	22.69	2 458.25	15.00%	2 827.00		
Ma...	1	F11055	n1010	20MPa/19mm concrete in footing, cast against excavated surface	M³	CONCRETE ...	19.68		1 641.03	1 887.18	32 300.07	15.00%	37 145.03		
Ma...	2	F51020	p2040	250 Micron Waterproofing Sheetting under Floors	M²	CONCRETE ...	124.59		11.80	13.58	1 470.77	15.04%	1 691.97		
Sub ...	6			<b>BRICKWORK</b>											
Ma...	0	G43010	r1010	Half claybrick wall in super- structure	M²	BRICKWORK	73.84		214.61	246.80	15 847.93	15.00%	18 224.92		
Ma...	1	G43030	h5050	Brick on edge wall in sides to bath	M²	BRICKWORK	1.21		384.48	442.16	465.23	15.00%	535.01		
Ma...	2	G43110	q1010	One claybrick wall in super structure ind wire ties	M²	BRICKWORK	136.19		427.02	491.08	58 155.69	15.00%	66 879.68		
Ma...	3	G43120	q1060	One claybrick wall in beam- fill exe 250mm n/e 300mm h	M	BRICKWORK	58.05		176.63	203.12	10 253.20	15.00%	11 791.12		
Ma...	4	G70010	b3110	Ground preparation for paving	M²	BRICKWORK	50.00		15.75	18.11	787.50	14.98%	905.50		
Ma...	5	G70020	b3110	Brick pavers on 50mm riversand on approved weedkiller	M²	BRICKWORK	50.00		247.19	284.26	12 359.27	15.00%	14 213.00		
Sub ...	7			<b>PLASTERING</b>											
Ma...	0	I30020	h5050	18mm internal plaster to vertical brick surfaces	M²	PLASTERING	285.39		89.41	102.82	25 516.29	15.00%	29 343.67		

Total Cost: 730 618.99    Total Sell: 840 882.36  
 Total Profit: 110 263.37    Total Markup: 15.00%

## Pricing the Bill of Quantities

This is similar to pricing the MasterBill.

### Copy from the MasterBill

Click on the (yellow) drop-down box and select the MasterBill.

(You can also type in the code or part thereof)

On clicking on the MasterBill's code, the pricing of the MasterBill will be copied to the Bill of Quantity item.

It will override existing price lines.

Copy MB	Item Co...	Description
=	RBC	RBC
		<b>CONCRETE &amp; W</b>
F01130	p2040	Power floated finis
F11055	n1010	20MPa/19mm conc excavated surface
Item Code	Description	
F01140	.	
F11010	Concrete 10MPa...	
F11020	Concrete 15MPa/...	
F11030	Concrete 15MPa/...	
F11040	Concrete 20MPa/...	
F11050	Concrete 15MPa/...	
F11055	20MPa/19mm con...	
F11060	25MPa/19mm con...	

### Inserting items in the BoQ

Sub ...	2	.	<b>EARTHWORKS</b>
	0	n1010	Excavate in soft for strip backfill. Trim excavation
			150 mm G7 selected layer Mos AASHTO (Min CBR 15
			<b>FORMWORK &amp; MOVE</b>
	0	n1010	Formwork to edge of slabs
	4	.	<b>REINFORCEMENT</b>
Mar...	0	p2040	Type reference 193

## Pricing a BoQ item

It is similar to pricing the MasterBill

The screenshot displays the 'Project BoQ Detailed Cost' window. It features a main table with columns for Code, Type, Description, Unit, Rate, Quantity, Formula, and Amount. A 'Global' panel on the left shows a list of items with their respective formulas. A 'Local' panel on the right shows a list of items with their respective formulas. A 'Resources' panel on the far right shows a list of resources with their respective codes and descriptions. A 'Master Bills' panel at the bottom right shows a list of master bills with their respective item codes and descriptions.

Code	Type	Description	Unit	Rate	Quantity	Formula	Amount
4E3220	R	Aluminium window 600w 900h	Each	695.00	1		695.00
O00010	MB	Align and fix window frame to wall	ea	61.00	1		61.00
4C1010	R	Concrete Lintel 100mm x 0.9m	Each	37.00		[GintClay] 'at least 1 lintel	37.00
I30050	MB	Plaster & paint not exceeding 150mm...	M	36.17		2* [Lheight] ' internal sides of window	65.10
I40040	MB	Plaster & paint of window openin...	M	52.62		[Lwidth] ' internal soffit	31.57
I40030	MB	Plaster & paint not exceeding 150mm ...	M	30.68		[Lwidth] ' Plaster internal window cill	18.41
G90170	MB	Internal terazo cill	M	135.61		[GintCill] * [Lwidth]	81.37
I30050	MB	Plaster & paint not exceeding 150mm...	M	36.17		[GxPlast] * 2* [Lheight] ' External sides of window	65.10
I40040	MB	Plaster & paint of window openin...	M	52.62		[GxPlast] * [Lwidth] ' External soffit	31.57
I40030	MB	Plaster & paint not exceeding 150mm ...	M	30.68		[GxPlast] * [Lwidth] ' Plaster external window cill	18.41
I40020	MB	Plaster external band 75mm wide aro...	M	40.96		[GxBandW] * 2 * ([Lwidth] + [Lheight])	122.88
8A0280	R	L/O subby Fix curtain track	Meter	24.75		[Lwidth]	14.85
4K5030	R	Curtain track-1.27m	Numbe...	246.24	1		246.24
O00020	MB	Waterproof window or door along peri...	M	10.00		2 * ([Lwidth] + [Lheight])	30.00

## Marking a block

A block can be marked for deletion, applying a mark-up, assigning to a cost centre etc.

Ctrl-Click the start of the block and Shift-Click the end

The section that you choose will turn blue.

In this example, the block is marked up.

The screenshot displays the 'Project BoQ Cost' window. It features a main table with columns for Header Type, Row Index, Copy MB, Item, Description, Unit, Cost Centre, Bill Quantity, Detail Price, Cost Rate, Sell Rate, Cost Amount, Markup, Sell Amount, Notes, and Final. A 'Project BoQ Cost' dialog box is open, showing a list of resources with their respective codes and descriptions. The dialog box has a 'Markup' column and an 'OK' button.

Header Type	Row Index	Copy MB	Item	Description	Unit	Cost Centre	Bill Quantity	Detail Price	Cost Rate	Sell Rate	Cost Amount	Markup	Sell Amount	Notes	Final
Sub ...	1	.		<b>SITWORKS &amp; DEMOLITIONS</b>											
Ma...	0	B00010	b2020	Setting out of house	Item	SITE & DEM...	1.00		1 401.82	1 612.09	1 401.82	15.00%	1 612.09		
Ma...	1	B20010	n1005	Clear site of vegetation for free-standing house. Strip & stockpile on site. Site approx 700M <sup>2</sup>	M <sup>2</sup>	EARTHWORKS	450.00		5.22						
Ma...	2	B80010	p2040	Soil poisoning under floor	M <sup>2</sup>	EARTHWORKS	124.59		7.25						
Ma...	3	B90030	b2030	Clean house and yard, level topsoil, dump rubbish	Item	EARTHWORKS	1.00		1 388.75	1 500.00	1 388.75	15.00%	1 500.00		
Sub ...	2	.		<b>EARTHWORKS</b>											
Ma...	0	C10040	n1010	Excavate in soft for strip footing, use as backfill. Trim excavation	M <sup>3</sup>	EARTHWORKS	6.85		136.43						
Ma...	2	C10420	p1010	150 mm G7 selected layer compacted to 93% Mos AASHTO (Min CBR 15%)	M <sup>3</sup>	EARTHWORKS	3.00		445.32	500.00	445.32	15.00%	500.00		
Sub ...	3	.		<b>FORMWORK &amp; MOVEMENT JOINTS</b>											
Ma...	0	D70050	n1010	Formwork to edge of slabs 300mm high	M <sup>2</sup>	FORMWORK...	29.02		258.90	280.00	258.90	15.00%	280.00		
Sub ...	4	.		<b>REINFORCEMENT</b>											
Ma...	0	E10050	p2040	Type reference 193	M <sup>2</sup>	REINFORCE...	124.59		35.14						
Ma...	1	E30110	n1010	SCBF High Tensile Bars: Y12mm	Ton	REINFORCE...	0.77		15 962.50	18 000.00	15 962.50	15.00%	18 000.00		
Ma...	2	E40030	q1100	4mm dia wire roof be blt into brickwork 1600mm long	NO	REINFORCE...	3.00		15.10						
Sub ...	5	.		<b>CONCRETE &amp; WATERPROOFING</b>											
Ma...	0	F01130	p2040	Power floated finish.	M <sup>2</sup>	CONCRETE ...	124.59		19.73	22.69	2 458.25	15.00%	2 827.00		
Ma...	1	F11055	n1010	20MPa/19mm concrete in footing, cast against excavated surface	M <sup>3</sup>	CONCRETE ...	19.68		1 641.03	1 887.18	32 300.07	15.00%	37 145.03		
Ma...	2	F51020	p2040	250 Micron Waterproofing Sheeting under Floors	M <sup>2</sup>	CONCRETE ...	124.59		11.80	13.58	1 470.77	15.04%	1 691.97		
Sub ...	6	.		<b>BRICKWORK</b>											
Ma...	0	G43010	r1010	Half daybrick wall in super-structure	M <sup>2</sup>	BRICKWORK	73.84		214.61	246.80	15 847.93	15.00%	18 224.92		
Ma...	1	G43030	h5050	Brick on edge wall in sides to bath	M <sup>2</sup>	BRICKWORK	1.21		384.48	442.16	465.23	15.00%	535.01		
Ma...	2	G43110	q1010	One daybrick wall in super structure ind wire	M <sup>2</sup>	BRICKWORK	136.19		427.02	491.08	58 155.69	15.00%	66 879.68		

## Analysing the Bill of Quantities

Once you have priced the BoQ, click on Calculate to display the resources used. You can edit the rates as they apply to the project and then click Update to update all the calculations based on these rates.

### Allowables based on Billed Quantity

	Resource	Description	Unit	Quantity	Rate	Amount	Date
<b>2</b>	<b>Plant</b>						
	2D0010	Diesel	Liter	14.12	16.50	233.00	2019/09/08
	<b>2D</b>	<b>Fuel &amp; oil</b>				<b>233.00</b>	
	2G0120	Con Mixer : 400 l	Day	0.71	1,370.00	967.29	2016/10/27
	<b>2G</b>	<b>Concrete</b>				<b>967.29</b>	
<b>Total:</b>	<b>2</b>	<b>Plant</b>				<b>1,200.29</b>	
<b>3</b>	<b>Labour</b>						
	3B0030	Concretor	Hour	6.35	50.00	317.72	2018/08/29
	3B0040	Plasterer	Hour	185.87	50.00	9,293.59	2018/08/29
	<b>3B</b>	<b>Artisans</b>				<b>9,611.31</b>	
	3F0020	Semi-skilled	Hour	371.74	40.00	14,869.74	2019/12/18
	<b>3F</b>	<b>Sem-skilled</b>				<b>14,869.74</b>	
	3G0010	Unskilled - hour	Hour	31.77	25.00	794.31	2019/11/25
	<b>3G</b>	<b>Unskilled</b>				<b>794.31</b>	
<b>Total:</b>	<b>3</b>	<b>Labour</b>				<b>25,275.36</b>	
<b>4</b>	<b>Material</b>						
	4B3070	Plaster Sand	M <sup>3</sup>	13.95	445.00	6,208.63	2019/09/06
	<b>4B</b>	<b>Aggregates</b>				<b>6,208.63</b>	
<b>Total:</b>	<b>4</b>	<b>Material</b>				<b>6,208.63</b>	
<b>5</b>	<b>Fastener/Sundry</b>						
	5A0030	Cement General Purpose 42.5N	50Kg	84.50	90.00	7,605.35	2019/09/08
	<b>5A</b>	<b>Cement, lime</b>				<b>7,605.35</b>	
<b>Total:</b>	<b>5</b>	<b>Fastener/Sundry</b>				<b>7,605.35</b>	
<b>Grand Total:</b>						<b>40,289.64</b>	

### My Construction Company 2021

Project: House MRBM 140M2

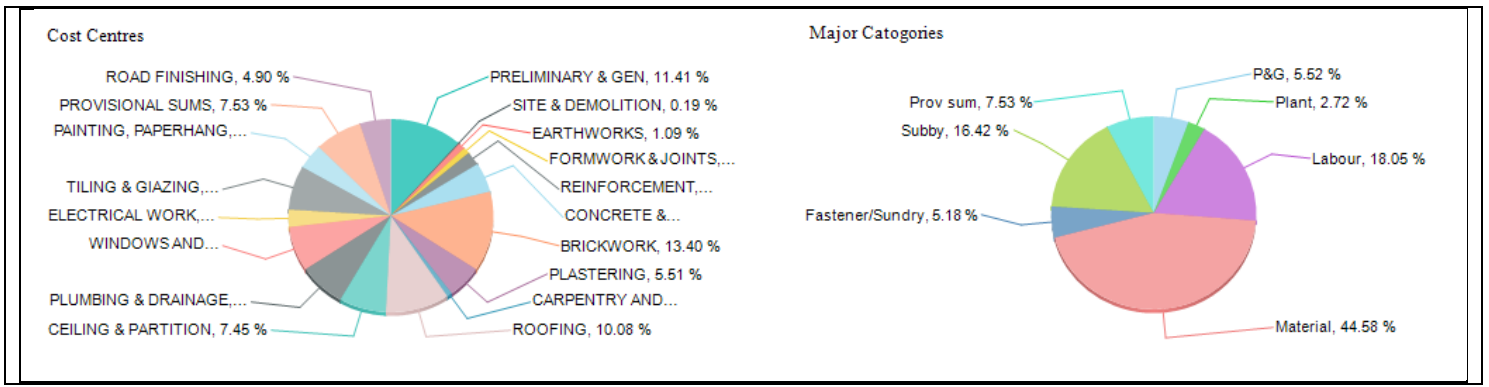
### Cost Centre Analysis *Based on Billed quantity*

ADMIN 2021/04/08 17:35

Cost Centre	Sell	Cost	Profit	P&G	Plant	Labour	Material	Fastener/ Sundry	Pipes	Roads	Subby	Prov sum	Other	Markup	% of Cost
A PRELIMINARY & GEN	95,835	83,335	12,500	40,300	11,235	31,800	0	0	0	0	0	0	0	150	11.41%
B SITE & DEMOLITION	1,612	1,402	210	0	0	1,402	0	0	0	0	0	0	0	15	0.19%
C EARTHWORKS	9,125	7,935	1,189	0	2,688	2,727	2,520	0	0	0	0	0	0	75	1.09%
D FORMWORK & JOINTS	8,642	7,515	1,127	0	0	4,023	0	3,492	0	0	0	0	0	15	1.03%
E REINFORCEMENT	19,313	16,794	2,519	0	0	2,190	14,604	0	0	0	0	0	0	45	2.30%
F CONCRETE & WATERP	41,664	36,229	5,435	0	3,916	6,813	13,514	11,985	0	0	0	0	0	45	4.96%
G BRICKWORK	112,549	97,869	14,680	0	770	42,369	43,277	9,915	0	0	1,538	0	0	90	13.40%
I PLASTERING	46,332	40,290	6,043	0	1,200	25,275	6,209	7,605	0	0	0	0	0	30	5.51%
J CARPENTRY AND JOIN	6,981	6,071	911	0	0	0	4,134	0	0	0	1,936	0	0	15	0.83%
K ROOFING	84,693	73,646	11,047	0	0	0	63,372	1,553	0	0	8,721	0	0	90	10.08%
L CEILING & PARTITION	62,589	54,424	8,165	0	0	0	40,099	0	0	0	14,325	0	0	75	7.45%
M PLUMBING & DRAINAG	62,297	54,171	8,126	0	0	0	20,125	0	0	0	34,046	0	0	300	7.41%
O WINDOWS AND DOORS	63,372	54,525	8,848	0	91	11,410	40,367	774	0	0	1,883	0	0	212	7.46%
P ELECTRICAL WORK	24,308	21,137	3,171	0	0	0	0	0	0	0	21,137	0	0	165	2.89%
Q TILING & GLAZING	62,065	53,969	8,096	0	0	0	33,886	75	0	0	20,008	0	0	75	7.39%
R PAINTING, PAPERHAN	35,100	30,521	4,579	0	0	0	14,125	0	0	0	16,396	0	0	75	4.18%
S PROVISIONAL SUMS	63,250	55,000	8,250	0	0	0	0	0	0	0	0	55,000	0	45	7.53%
Z ROAD FINISHING	41,155	35,787	5,368	0	0	3,858	29,500	2,429	0	0	0	0	0	30	4.90%
<b>Grand Total:</b>	<b>840,882</b>	<b>730,619</b>	<b>110,263</b>	<b>40,300</b>	<b>19,900</b>	<b>131,869</b>	<b>325,732</b>	<b>37,828</b>	<b>0</b>	<b>0</b>	<b>119,990</b>	<b>55,000</b>	<b>0</b>	<b>0</b>	
<b>Percentage of Cost:</b>		<b>15.09%</b>	<b>5.52%</b>	<b>2.72%</b>	<b>18.05%</b>	<b>44.58%</b>	<b>5.18%</b>	<b>0.00%</b>	<b>0.00%</b>	<b>16.42%</b>	<b>7.53%</b>	<b>0.00%</b>			

This is followed by pie-charts presentation of the cost centres and major resource categories





**Cost-rate breakdown**

**My Construction Company 2021**

**House MRBM 140M2**

**Cost Rate of Items (Rate break down)**

Project Code: 0001

ADMIN

Mon 05 Apr 2021 05:15:52

Seq	Item	Description	Unit	Qty	Sell Rate	Cost Rate	M/ Upp	P&G	Plant	Labour	Material	Fastener /Sundry	Pipes	Roads	Subby	Prov sum	Other
<b>BRICKWORK</b>																	
32	r1010	Half claybrick wall in super- structure	M <sup>2</sup>	73.84	246.80	214.61	0.15	-	150.07	6,557.21	8,306.46	834.19	-	-	-	-	-
33	h5050	Brick on edge wall in sides to bath	M <sup>2</sup>	1.21	442.16	384.48	0.15	-	2.60	313.86	134.30	14.46	-	-	-	-	-
34	q1010	One claybrick wall in super structure incl wire ties	M <sup>2</sup>	136.19	491.08	427.02	0.15	-	553.52	24,186.36	30,338.89	3,076.93	-	-	-	-	-
35	q1060	One claybrick wall in beam- fill exe 250mm n/e 300mm h	M	58.05	203.12	176.63	0.15	-	63.52	6,397.91	3,438.67	353.10	-	-	-	-	-
36	b3110	Ground preparation for paving	M <sup>2</sup>	50.00	18.11	15.75	0.15	-	-	-	-	-	-	-	787.50	-	-
37	b3110	Brick pavers on 50mm riversand on approved weedkiller	M <sup>2</sup>	50.00	284.26	247.19	0.15	-	-	4,914.00	1,059.00	5,636.27	-	-	750.00	-	-
<u>Subtotal BRICKWORK:</u>								0.00	769.71	42,369.34	43,277.33	9,914.95	0.00	0.00	1,537.50	0.00	0.00
<b>PLASTERING</b>																	
39	h5050	18mm internal plaster to vertical brick surfaces	M <sup>2</sup>	285.39	102.82	89.41	0.15	-	808.60	15,926.64	4,286.18	4,494.87	-	-	-	-	-
40	q1010	18mm external plaster to vertical brick surfaces	M <sup>2</sup>	153.60	110.60	96.18	0.15	-	391.69	9,348.72	1,922.45	3,110.48	-	-	-	-	-
<u>Subtotal PLASTERING:</u>								0.00	1,200.29	25,275.36	6,208.63	7,605.35	0.00	0.00	0.00	0.00	0.00

**Sort the BoQ from the most to the least expensive item. The 80:20 principle usually applies**

**My Construction Company 2021**

**House MRBM 140M2**

**Cost Bill sorted from High to Low**

Project Code: 0001

ADMIN

Mon 05 Apr 2021 05:30:58

Seq	Item	Description	Unit	Qty	Cost Rate	Cost	P&G	Plant	Labour	Material	Fastener /Sundry	Pipes	Roads	Subby	Prov sum	Other
34	q1010	One claybrick wall in super structure incl wire ties	M <sup>2</sup>	136.2	427.02	58,155.71	-	553.52	24.19	30.34	3.08	-	-	-	-	-
107	p3020	Ceramic floor tiles on adhesive Type 1	M <sup>2</sup>	124.6	368.65	45,931.03	-	-	-	27.87	-	-	-	18,065.91	-	-
11	a2010	Contractor's supervision	Month	3.0	14,345.00	43,035.00	-	11,235.00	31.80	-	-	-	-	-	-	-
29	n1010	20MPa/19mm concrete in footing, cast against excavated surface	M <sup>3</sup>	19.7	1,641.03	32,300.03	-	3,442.00	5.10	12.26	11.50	-	-	-	-	-
116	m1010	Provisional sum by client for built in cupboards	Sum	1.0	30,000.00	30,000.00	-	-	-	-	-	-	-	-	30,000.00	-
80	c3540	Aluminium window 1500w 1500h	ea	6.0	4,752.54	28,515.26	-	40.49	4.51	23.41	0.33	-	-	222.75	-	-
39	h5050	18mm internal plaster to vertical brick surfaces	M <sup>2</sup>	285.4	89.41	25,516.30	-	808.60	15.93	4.29	4.49	-	-	-	-	-
52	s1010	6.4mm gypsumboard ceiling fixed to branders & h/strp	M <sup>2</sup>	124.6	203.49	25,353.72	-	-	-	19.37	-	-	-	5,980.44	-	-
44	t3039	Rooftiles ludlow std complete	M <sup>2</sup>	180.0	133.67	24,060.60	-	-	-	20.82	-	-	-	3,240.00	-	-
121	b3080	ClearVu mesh panel 3305w 1800h	Panel	10.0	2,284.00	22,840.00	-	-	2.34	20.50	-	-	-	-	-	-
117	m1020	Provisional sum by client for kitchen cupboards	Sum	1.0	20,000.00	20,000.00	-	-	-	-	-	-	-	-	20,000.00	-

# My Construction Company 2021

## House MRBM 140M2

## Sell Bill of Quantity

Project Code: 0001

ADMIN

Mon 05 Apr 2021 05:37:30

Item	Description	Unit	Quantity	Rate	Amount
<b>BRICKWORK</b>					
r1010	Half claybrick wall in super- structure	M <sup>2</sup>	73.84	246.80	18,224.92
h5050	Brick on edge wall in sides to bath	M <sup>2</sup>	1.21	442.16	535.01
q1010	One claybrick wall in super structure incl wire ties	M <sup>2</sup>	136.19	491.08	66,879.69
q1060	One claybrick wall in beam- fill exe 250mm n/e 300mm h	M	58.05	203.12	11,791.12
b3110	Ground preparation for paving	M <sup>2</sup>	50.00	18.11	905.50
b3110	Brick pavers on 50mm riversand on approved weedkiller	M <sup>2</sup>	50.00	284.26	14,213.00
<u>Subtotal BRICKWORK:</u>					112,549.25
<b>PLASTERING</b>					
h5050	18mm internal plaster to vertical brick surfaces	M <sup>2</sup>	285.39	102.82	29,343.68
q1010	18mm external plaster to vertical brick surfaces	M <sup>2</sup>	153.60	110.60	16,988.60
<u>Subtotal PLASTERING:</u>					46,332.28

### Supply and install (Electrical) lay-out

#### My Construction Company 2021

#### House MRBM 140M2

#### Sell Bill of Quantity *(Including Material & Labour rates)*

Project Code: 0001


ADMIN


Mon 05 Apr 2021 05:44:40

Seq.	Item	Description	Unit	Quantity	Material	Labour	Total Rate	Amount
<b>BRICKWORK</b>								
32	r1010	Half claybrick wall in super- structure	M <sup>2</sup>	73.84	125.81	88.80	246.80	18,224.92
33	h5050	Brick on edge wall in sides to bath	M <sup>2</sup>	1.21	125.09	259.39	442.16	535.01
34	q1010	One claybrick wall in super structure incl wire ties	M <sup>2</sup>	136.19	249.43	177.59	491.08	66,879.69
35	q1060	One claybrick wall in beam- fill exe 250mm n/e 300mm h	M	58.05	66.41	110.21	203.12	11,791.12
36	b3110	Ground preparation for paving	M <sup>2</sup>	50.00	15.75	0.00	18.11	905.50
37	b3110	Brick pavers on 50mm riversand on approved weedkiller	M <sup>2</sup>	50.00	148.91	98.28	284.26	14,213.00
<u>Subtotal BRICKWORK:</u>								97,868.84
<b>PLASTERING</b>								
39	h5050	18mm internal plaster to vertical brick surfaces	M <sup>2</sup>	285.39	33.60	55.81	102.82	29,343.68
40	q1010	18mm external plaster to vertical brick surfaces	M <sup>2</sup>	153.60	35.32	60.86	110.60	16,988.60
<u>Subtotal PLASTERING:</u>								40,289.64

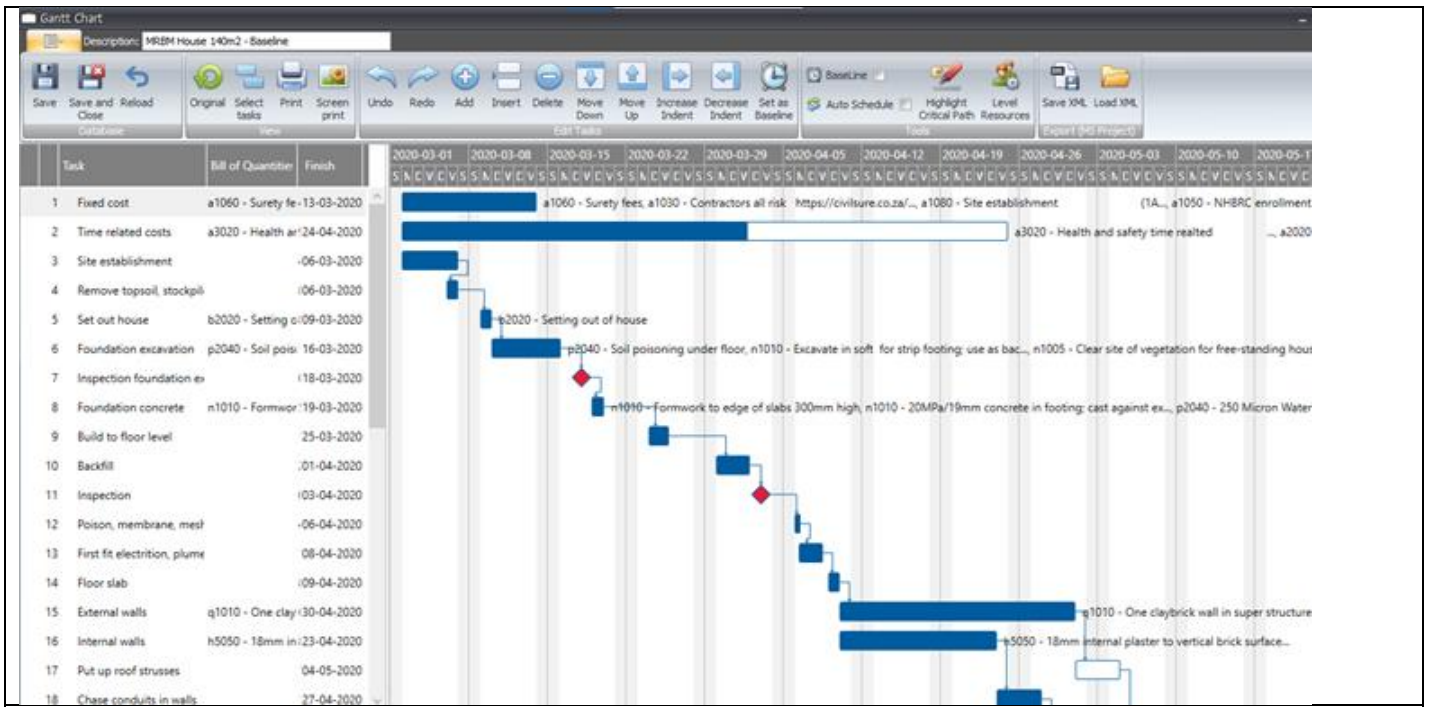
## Variance reports

This compares the Allowables from the Estimate/ Certificate interface to the actuals from the Accounting system

 <b>My Construction Company 2021</b> <b>House MRBM 140M2</b>							<b>Cost centre Variance report</b> <i>(based on Cumulative)</i>	
Project Code: 0001		ADMIN			Sun 23 May 2021 04:48:30			
Cost Centre	Description	Allowable	Actual (Cost ledger)	Variance	%Actual/Allowable	%Variance/Allowable		
A	PRELIMINARY & GEN	65,541	58,354	7,187	89.0	11.0		
B	SITE & DEMOLITION	1,402	4,434	-3,032	316.3	-216.3		
C	EARTHWORKS	5,522	33,988	-28,465	615.5	-515.5		
D	FORMWORK & JOINTS	7,515	0	7,515	0.0	100.0		
E	REINFORCEMENT	16,748	23,198	-6,450	138.5	-38.5		
F	CONCRETE & WATERPRF	36,229	49,410	-13,181	136.4	-36.4		
G	BRICKWORK	97,869	85,411	12,458	87.3	12.7		
I	PLASTERING	40,290	21,708	18,582	53.9	46.1		
J	CARPENTRY AND JOINER	6,071	2,500	3,571	41.2	58.8		
K	ROOFING	73,646	73,514	132	99.8	0.2		
L	CEILING & PARTITION	54,424	0	54,424	0.0	100.0		
M	PLUMBING & DRAINAGE	7,056	0	7,056	0.0	100.0		
O	WINDOWS AND DOORS	53,079	40,937	12,142	77.1	22.9		
P	ELECTRICAL WORK	0	0	0	0.0	0.0		
Q	TILING & GLAZING	0	0	0	0.0	0.0		
R	PAINTING, PAPERHANG	0	9,016	-9,016	0.0	0.0		
S	PROVISIONAL SUMS	0	0	0	0.0	0.0		
Z	ROAD FINISHING	0	0	0	0.0	0.0		
<b>Total:</b>		<b>465,392</b>	<b>402,470</b>	<b>62,922</b>	<b>86.5</b>	<b>13.5</b>		

 <b>My Construction Company 2021</b> <b>House MRBM 140M2</b>							<b>Variance</b> <i>(based on Cumulative)</i>					
Project Code: House MRBM 140M2		ADMIN			Sun 23 May 2021 04:51:56							
	Resource	Description	Unit	Qty	Rate	Amt	Qty	Rate	Amt	Qty	Rate	Amt
	5J0010	* Clay Pavers (PA)	Thousand	2.5	2,277	5,636	3.0	2,277	6,832	-0.5	0	-1,196
	5J	Pavers				5,636			6,832			-1,196
<b>Total:</b>	<b>5</b>	<b>Fastener/Sundry</b>				<b>35,306</b>			<b>33,618</b>			<b>1,689</b>
<b>8</b>	<b>Subby</b>											
	8A0020	* L/O subby Labour soil/poison & weed/kill	M2	50.0	15	750	50.0	15	750	0.0	0	0
	8A0210	L/O subby Fix cornice	Meter	123.0	36	4,426	0.0	0	123.0	0	0	4,426
	8A0260	L/O subby Fix skirting	Meter	123.0	16	1,936	0.0	0	123.0	0	0	1,936
	8A0280	* L/O subby Fix curtain track	Meter	12.6	25	312	13.0	25	322	-0.4	0	-10
	8A0360	L/O subby Fit tr hold/soapdish	Number	0.0	68	0	0.0	0	0	0.0	0	0
	8A0370	L/O subby Lo glazed wall tiles	M <sup>2</sup>	0.0	60	0	0.0	0	0	0.0	0	0
	8A0380	L/O subby Painting lab-1+2 pva	Meter	0.0	9	0	0.0	0	0	0.0	0	0
	8A0390	* L/O subby Painting lab-1+2enam	M2	13.5	23	304	14.0	23	315	-0.5	0	-11
	8A0400	* L/O subby Painting lab-varnish	M2	16.7	22	367	17.0	22	374	-0.3	0	-7
	8A0420	L/O subby Paint lab only pva	M <sup>2</sup>	0.0	27	0	0.0	0	0	0.0	0	0
	8A0490	* L/O subby Fit timber external door	Number	3.0	300	900	3.0	300	900	0.0	0	0
	8A0510	L/O subby Lay floor tiles	M <sup>2</sup>	0.0	145	0	0.0	0	0	0.0	0	0
	8A0520	L/O subby Shower floor broken tiles	Number	0.0	203	0	0.0	0	0	0.0	0	0
	8A0590	L/O subby Fix bathroom accessories	Number	0.0	68	0	0.0	0	0	0.0	0	0
	8A0610	L/O subby Ceiling brander	M <sup>2</sup>	124.6	18	2,243	0.0	0	124.6	0	0	2,243
	8A0620	L/O subby Fix ceiling	M <sup>2</sup>	124.6	48	5,980	0.0	0	124.6	0	0	5,980

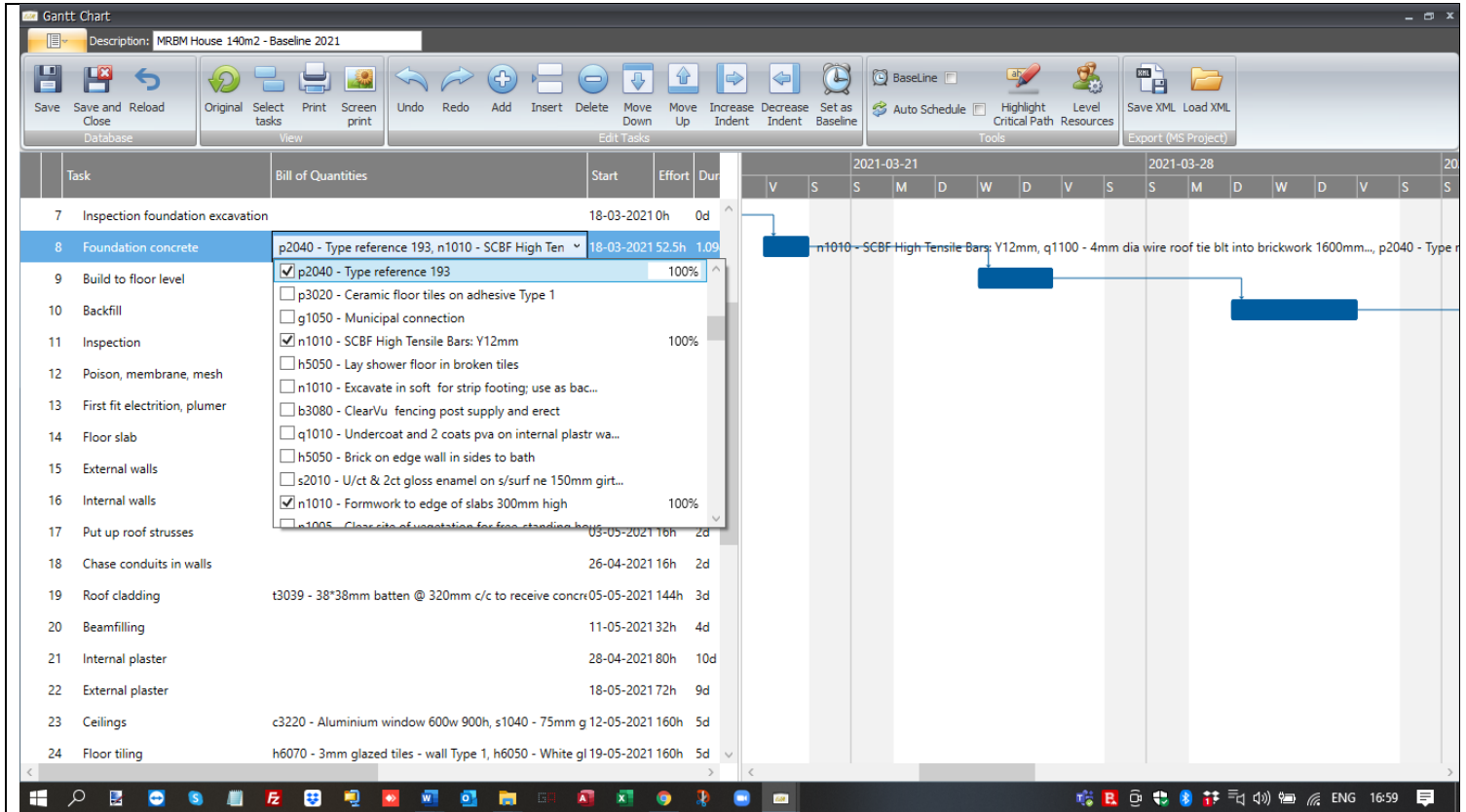
# Scheduling and cashflow overview

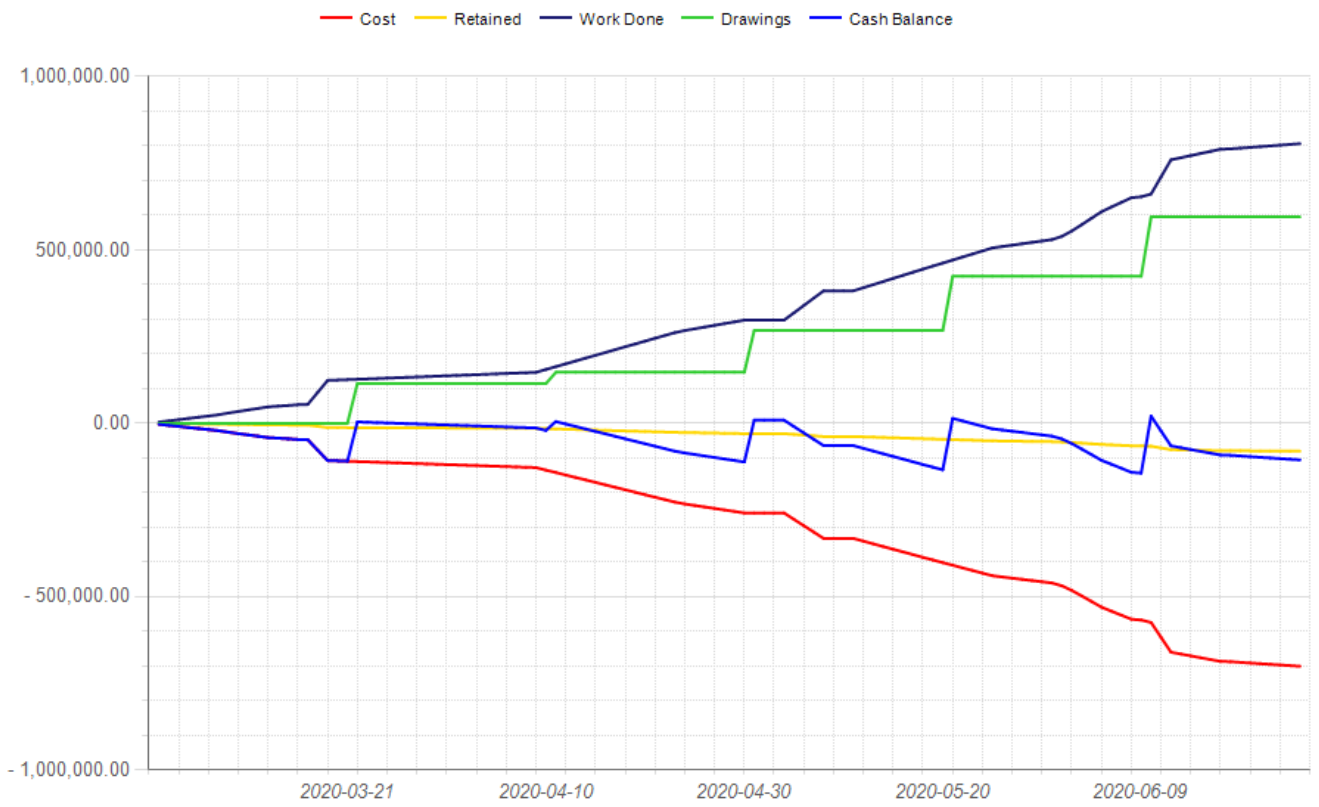


Create the Gantt chart and dependencies - similar to MS, Project Progress black, Critical Path is red, non-critical blue

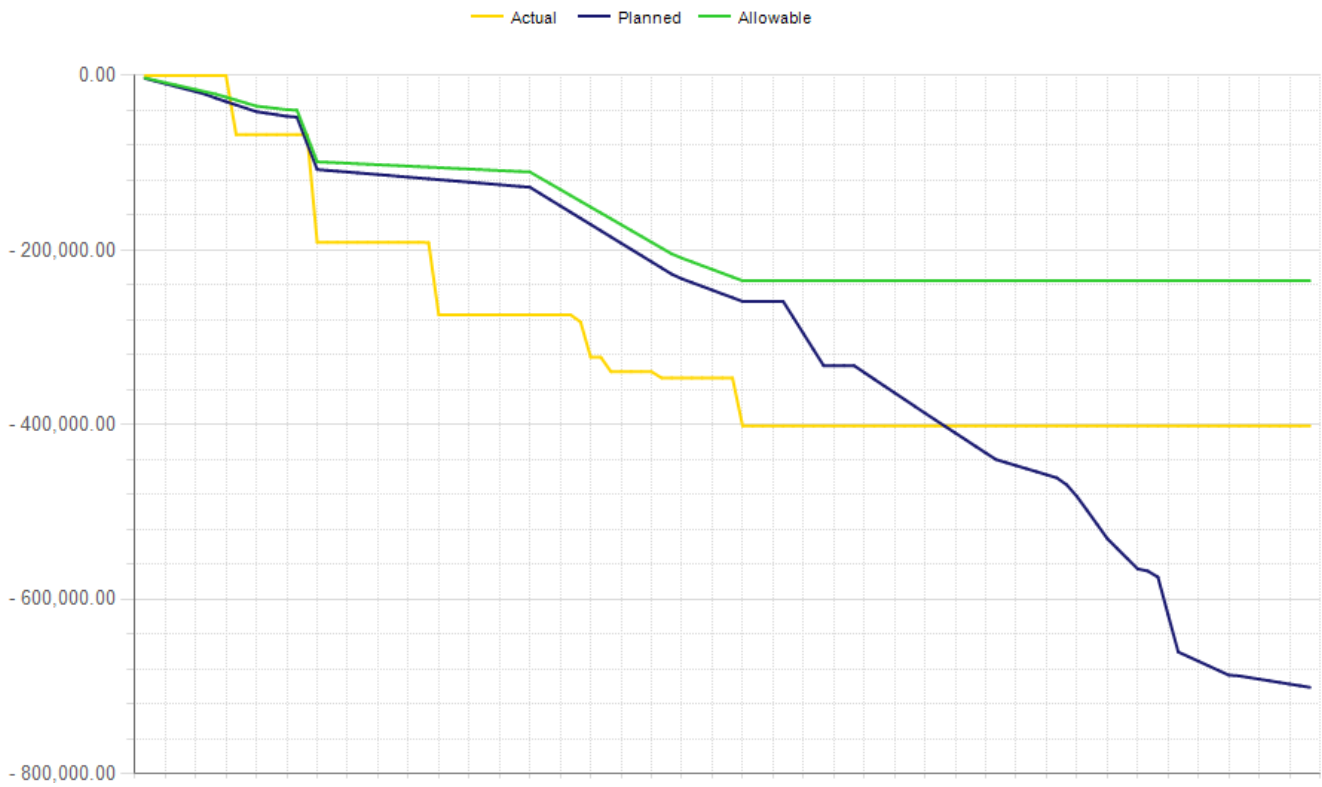
## Link the Bill to the Schedule.

- A Bill of Quantity item can be allocated to more than one Bar. (e.g. concrete in slabs will be cast in three stages).





**Contractor's cashflow**



**Planned vs. actual cashflow**

# Certificate overview

With the Certificate you can certify the amount of work already done on the project by quantity, %, or worksheet

- The Certificate system is interlinked with the Estimating system. Once you have created the Bill (either by importing or typing it), you can create a Certificate.
- There is a facility to do your measurements on screen by double-clicking on Cumulative Quantity. You can use various in-built functions. Refer to the screen.
- You can also enter as a percentage completed or for a cost centre such as Earthworks
- The system also allows for variable retention, Materials on Site, Escalation and a cover page.
- Because of the link to the Estimate, one can print a report of Allowables based on the month or cumulative progress. There is also a provision for an internal quantity, should the actual progress differ from the claimed quantity.

Header Type	Item C...	Description	Unit	Bill Quantity	Sell Rate	Escalation	Current ...	Current Value	Final Estima...	Internal Qt...	Previous Cu...	Cumulative Quantity	Cumulative Percentage	Cumulative ...
<b>Sub H... . SITeworks &amp; DEMOLITIONS</b>														
	b2020	Setting out of house	Item	1.00	1 612.09	0	1.00	1 612.09	1.00	0.00		1.00	100.00%	1 612.09
	n1005	Clear site of vegetabon for free-standing ho...	M²	450.00	6.00	0	450.00	2 700.00	450.00	0.00		450.00	100.00%	2 700.00
	p2040	Soil poisoning under floor	M²	124.59	8.34	0	125.00	1 042.50	124.59	0.00		125.00	100.33%	1 042.50
	b2030	Clean house and yard, level topsoil, dump ru...	Item	1.00	1 597.06	0	0.00	0.00	1.00	0.00		0.00	0.00%	0.00
<b>Sub H... . EARTHWORKS</b>														
	n1010	Excavate in soft for strip footing, use as bac...	M³	6.85	156.89	0	7.00	1 098.23	6.85	0.00		7.00	102.23%	1 098.23
	p1010	150 mm G7 selected layer compacted to 93%...	M³	5.30	512.11	0	3.00	1 536.33	2.00	0.00		3.00	56.60%	1 536.33
<b>Sub H... . FORMWORK &amp; MOVEMENT JOINTS</b>														
	n1010	Formwork to edge of slabs 300mm high	M²	29.02	297.74	0	29.00	8 634.46	29.02	0.00		29.00	99.91%	8 634.46
<b>Sub H... . REINFORCEMENT</b>														
	p2040	Type reference 193	M²	124.59	40.41	0	125.00	5 051.25	124.59	0.00		125.00	100.33%	5 051.25
	n1010	SCBF High Tensile Bars: Y12mm	Ton	0.77	18 356.88	0	0.70	12 849.82	0.77	0.00		0.70	90.33%	12 849.82
	q1100	4mm dia wire roof tie bit into brickwork 1600...	NO	3.00	17.36	0	0.00	0.00	3.00	0.00		0.00	0.00%	0.00
<b>Sub H... . CONCRETE &amp; WATERPROOFING</b>														
	p2040	Power floated finish.	M²	124.59	22.69	0	125.00	2 836.25	124.59	0.00		125.00	100.33%	2 836.25
	n1010	20MPa/19mm concrete in footing, cast again...	M³	19.68	1 887.18	0	20.00	37 743.60	19.68	0.00		20.00	101.61%	37 743.60
	p2040	250 Micron Waterproofing Sheetting under Fl...	M²	124.59	13.58	0	125.00	1 697.50	124.59	0.00		125.00	100.33%	1 697.50
<b>Sub H... . BRICKWORK</b>														
	r1010	Half claybrick wall in super-structure	M²	73.84	246.80	0	36.00	8 884.80	73.84	0.00		36.00	48.75%	8 884.80
	h5050	Brick on edge wall in sides to bath	M²	1.21	442.16	0	0.00	0.00	1.21	0.00		0.00	0.00%	0.00
	q1010	One claybrick wall in super structure ind wire ...	M²	136.19	491.08	0	136.00	66 786.88	136.19	0.00		136.00	99.86%	66 786.88
	q1060	One claybrick wall in beam- fill exe 250mm n/...	M	58.05	203.12	0	0.00	0.00	58.05	0.00		0.00	0.00%	0.00
	b3110	Ground preparation for paving	M²	50.00	18.11	0	0.00	0.00	50.00	0.00		0.00	0.00%	0.00
	b3110	Brick pavers on 50mm riversand on approved...	M²	50.00	284.26	0	0.00	0.00	50.00	0.00		0.00	0.00%	0.00

Record progress: Cumulative, Month, Percentage or Worksheet by double-clicking on the CumQty cell of the item

## Setting up retention rules

Drag a column header here to group by that column

Percentage Retention	Base Retention	Retention Active Up To
* Click here to add a new row		
10.00	0.00	500 000.00
0.00	50 000.00	1 500 000.00

**Project Retention Rules**

File Navigation

Accept New Accept And Close Accept And New Next Item Previous Item

Percentage Retention (%):

Base Retention (currency):

Upper Limit (currency):

## My Construction Company 2021

### House MRBM 140M2

### Materials on Site (MOS)

Project Code: 0001

ADMIN

Tue 06 Apr 2021 07:59:58

Resource	Description	Unit	Current Rate	Base Rate	Quantity	Amount @ Base Rate
5A0020	Cement Portland-Composite 32.5N	50Kg	90.00	85.0000	20.00	1,700.00
5A0030	Cement General Purpose 42.5N	50Kg	92.00	90.0000	50.00	4,500.00
5D0150	50 * 152 rough sawn SAP	Meter	60.00	58.0000	100.00	5,800.00
8C0020	Plumbing subcon. Gully	Number Of	872.10	872.1000	3.00	2,616.30
<b>Total MOS at Base Rate</b>						<b>14,616.30</b>

Record the base rate (defaults to tender rate) current price of the material and quantity

## My Construction Company 2021

### House MRBM 140M2

### Progress Claim (Certificate)

Project Code: 0001

ADMIN

Tue 06 Apr 2021 08:05:10

Item	Description	Unit	Rate	--- Billed ---		--- Current ---		--- Cumulative ---	
				Quantity	Amount	Quantity	Amount	Quantity	Amount
<b>House MRBM 140M2</b>									
<b>PRELIMINARIES AND GENERAL</b>									
a1020	FEM (injury on duty) <a href="https://www.fema.co.za/">https://www.fema.co.za/</a>	Sum	4,600.00	1.00	4,600.00	1.00	4,600.00	1.00	4,600.00
a1030	Contractors all risk <a href="https://civilsure.co.za/contractors-all-risk/">https://civilsure.co.za/contractors-all-risk/</a>	Sum	1,380.00	1.00	1,380.00	1.00	1,380.00	1.00	1,380.00
a1040	SASRIA insurance <a href="https://www.sasria.co.za/">https://www.sasria.co.za/</a>	Sum	5,750.00	1.00	5,750.00	1.00	5,750.00	1.00	5,750.00
a1050	NHBRC enrollment <a href="http://www.nhbrc.org.za/files/builder_info/Fee_structure.pdf">http://www.nhbrc.org.za/files/builder_info/Fee_structure.pdf</a>	Sum	7,475.00	1.00	7,475.00	1.00	7,475.00	1.00	7,475.00
	A. Max R500 000: 1.3%								
	B. Max R1 000 000: A + (1%(Value-500000))								
	C. Max R2 000 000: A + B + (0.75%(Value-1500000))								
	D. Max R5 000 000: A + B + C + (0.50%(Value-2000000))								
a1060	Surety fees	Sum	1,840.00	1.00	1,840.00	1.00	1,840.00	1.00	1,840.00
a1080	Site establishment (1A)	Item	7,705.00	1.00	7,705.00	1.00	7,705.00	1.00	7,705.00
a1090	Overhead plant and tools provision (1G)	Item	6,900.00	1.00	6,900.00	1.00	6,900.00	1.00	6,900.00
a2020	Site running cost (1B)	Month	2,185.00	3.00	6,555.00	1.00	2,185.00	1.00	2,185.00
a2010	Contractor's supervision	Month	16,496.75	3.00	49,490.25	1.00	16,496.75	1.00	16,496.75